



Cable ID/ Test ID: CCO-011639

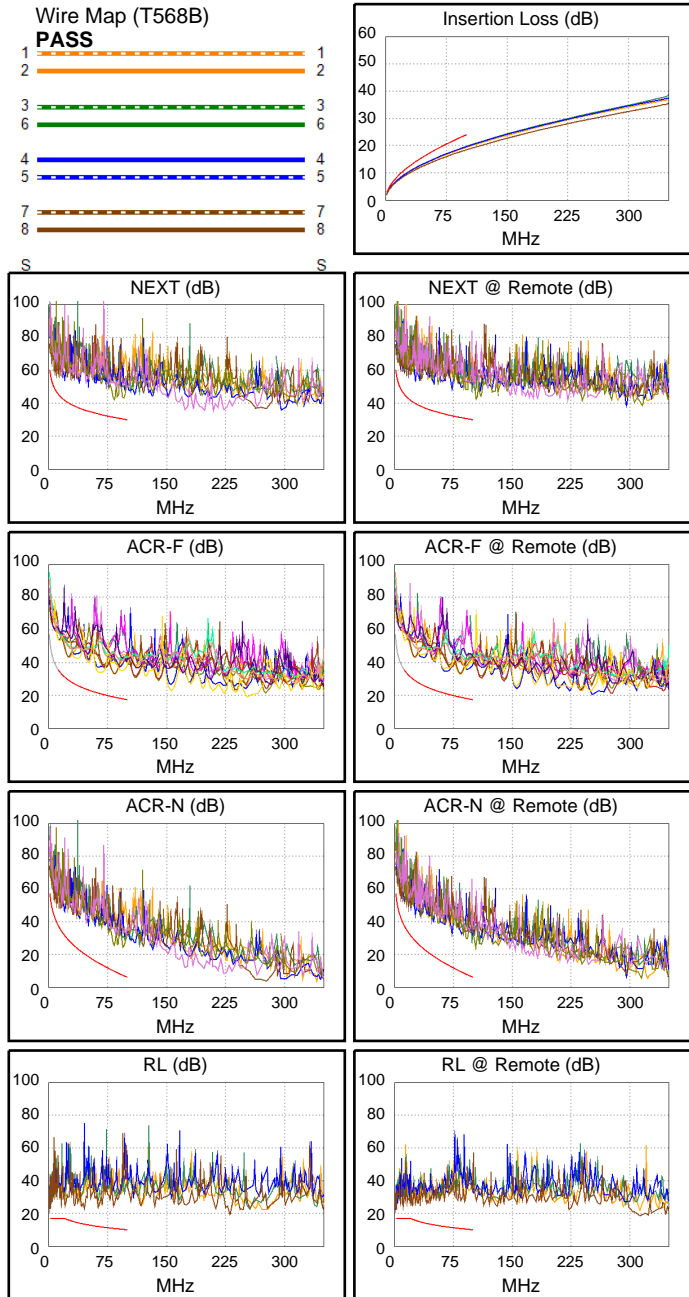
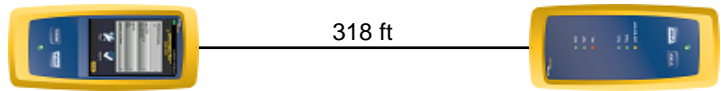
Test Limit: TIA Cat 5e Channel
Limits Version: V7.11
Date / Time: 10/11/2025 04:16:58 PM
Operator: CC
Headroom 10.8 dB (NEXT 3,6-7,8)
Cable Type: Cat 5e U/UTP
NVP: 69.0%

Main: Versiv
S/N: 1927448
Software Version: V6.13 Build 2
Calibration Date: 07/30/2025
Adapter: DSX-8000 (DSX-CHA804)
S/N: 23340196

Test Summary: PASS

Remote: Versiv
S/N: 1927219
Software Version: V6.13 Build 2
Calibration Date: 07/30/2025
Adapter: DSX-8000R (DSX-CHA804)
S/N: 23340195

Length (ft), Limit 328	[Pair 7,8]	318
Prop. Delay (ns), Limit 555	[Pair 4,5]	493
Delay Skew (ns), Limit 50	[Pair 4,5]	24
Resistance (ohms)	[Pair 4,5]	18.49
Insertion Loss Margin (dB)	[Pair 3,6]	4.3
Frequency (MHz)	[Pair 3,6]	100.0
Limit (dB)	[Pair 3,6]	24.0



Worst Case Margin Worst Case Value

PASS	MAIN	SR	MAIN	SR
Worst Pair	3,6-7,8	3,6-4,5	3,6-7,8	1,2-4,5
NEXT (dB)	10.8	11.5	11.3	16.9
Freq. (MHz)	83.3	3.9	95.0	99.3
Limit (dB)	31.5	53.8	30.5	30.1
Worst Pair	3,6	3,6	7,8	1,2
PS NEXT (dB)	13.4	13.7	13.7	18.2
Freq. (MHz)	83.3	8.1	95.0	99.5
Limit (dB)	28.5	45.5	27.5	27.1

PASS	MAIN	SR	MAIN	SR
Worst Pair	7,8-1,2	1,2-7,8	1,2-3,6	1,2-3,6
ACR-F (dB)	12.7	13.5	14.2	14.0
Freq. (MHz)	64.0	64.0	84.0	84.0
Limit (dB)	21.3	21.3	18.9	18.9
Worst Pair	1,2	3,6	1,2	3,6
PS ACR-F (dB)	15.2	16.1	16.5	16.1
Freq. (MHz)	68.0	84.0	83.5	84.0
Limit (dB)	17.8	15.9	16.0	15.9

N/A	MAIN	SR	MAIN	SR
Worst Pair	3,6-4,5	3,6-4,5	3,6-7,8	1,2-4,5
ACR-N (dB)	11.9	12.0	16.7	21.2
Freq. (MHz)	10.0	2.1	95.0	99.3
Limit (dB)	39.9	54.8	7.1	6.2
Worst Pair	3,6	3,6	3,6	1,2
PS ACR-N (dB)	14.1	14.3	18.3	22.8
Freq. (MHz)	1.8	3.9	95.0	99.5
Limit (dB)	53.4	46.4	4.1	3.2

PASS	MAIN	SR	MAIN	SR
Worst Pair	7,8	7,8	7,8	7,8
RL (dB)	7.8	7.3	9.3	7.3
Freq. (MHz)	20.8	10.9	45.8	10.9
Limit (dB)	16.8	17.0	13.4	17.0

Compliant Network Standards:
 10BASE-T 100BASE-TX 100BASE-T4
 1000BASE-T 2.5GBASE-T ATM-25
 ATM-51 ATM-155 100VG-AnyLan
 TR-4 TR-16 Active TR-16 Passive