



**Cable ID: C5O-009092**

Test Limit: TIA Cat 5e Channel

Limits Version: V7.7

Date / Time: 01/11/2026 02:05:58 PM

Headroom 14.8 dB (NEXT 1,2-3,6)

Cable Type: Cat 5e U/UTP

NVP: 69.0%

Main: Versiv

S/N: 20520181

Software Version: V6.8 Build 6

Calibration Date: 07/19/2023

Adapter: DSX-5000 (DSX-CHA004)

S/N: 5199219

**Test Summary: PASS**

Remote: Versiv

S/N: 20500587

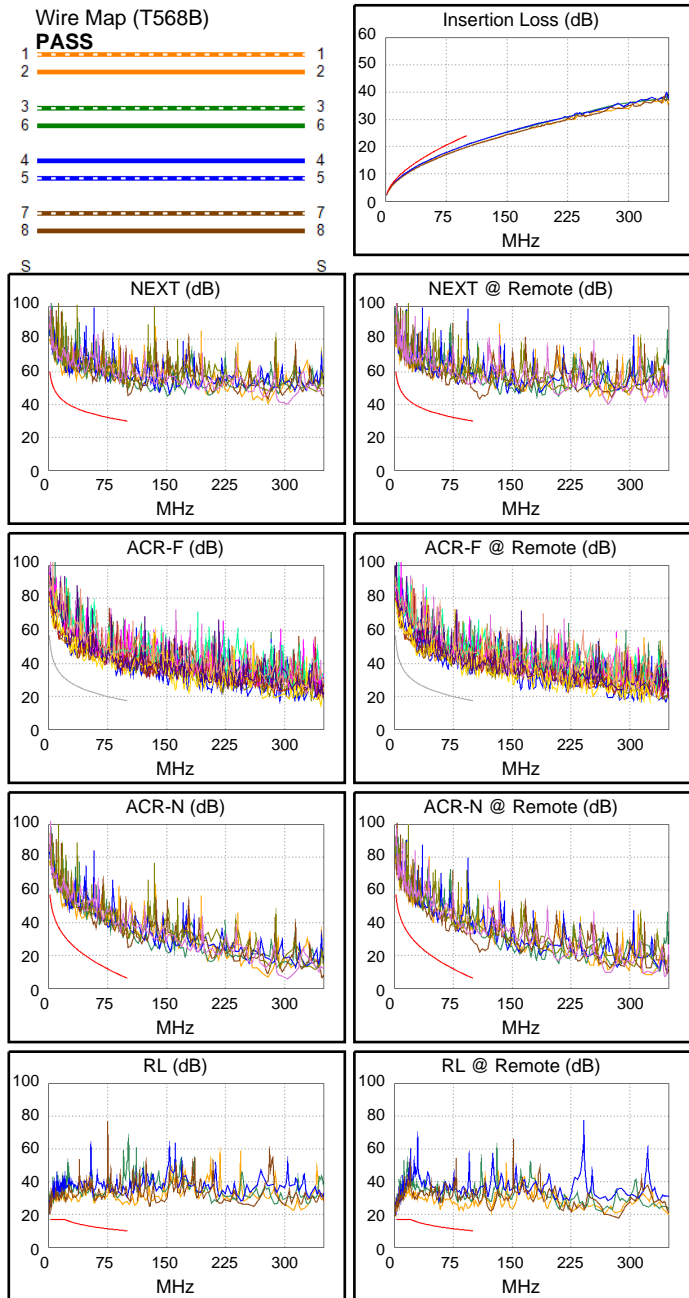
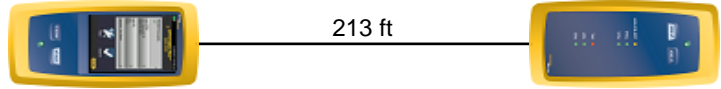
Software Version: V6.8 Build 6

Calibration Date: 07/19/2023

Adapter: DSX-5000R (DSX-CHA004)

S/N: 5199212

Length (ft), Limit 328	[Pair 7,8]	213
Prop. Delay (ns), Limit 555	[Pair 4,5]	329
Delay Skew (ns), Limit 50	[Pair 4,5]	15
Resistance (ohms)	[Pair 4,5]	30.34
Insertion Loss Margin (dB)	[Pair 4,5]	3.3
Frequency (MHz)	[Pair 4,5]	100.0
Limit (dB)	[Pair 4,5]	24.0



Worst Case Margin Worst Case Value

PASS	MAIN	SR	MAIN	SR
Worst Pair	1,2-3,6	1,2-3,6	3,6-4,5	3,6-4,5
<b>NEXT (dB)</b>	15.2	14.8	18.4	18.7
Freq. (MHz)	17.4	1.6	100.0	98.3
Limit (dB)	43.0	59.9	30.1	30.2
Worst Pair	1,2	3,6	4,5	4,5
<b>PS NEXT (dB)</b>	17.0	16.3	18.9	19.8
Freq. (MHz)	17.4	1.6	100.0	98.3
Limit (dB)	40.0	56.9	27.1	27.2

PASS	MAIN	SR	MAIN	SR
Worst Pair	1,2-7,8	7,8-1,2	1,2-7,8	7,8-1,2
<b>ACR-F (dB)</b>	14.3	14.3	14.3	14.3
Freq. (MHz)	86.3	86.3	86.3	86.3
Limit (dB)	18.7	18.7	18.7	18.7
Worst Pair	7,8	1,2	1,2	3,6
<b>PS ACR-F (dB)</b>	16.2	16.6	17.2	17.0
Freq. (MHz)	86.5	86.8	97.5	98.5
Limit (dB)	15.7	15.6	14.6	14.5

N/A	MAIN	SR	MAIN	SR
Worst Pair	1,2-3,6	1,2-3,6	3,6-4,5	3,6-4,5
<b>ACR-N (dB)</b>	16.1	15.2	21.7	22.0
Freq. (MHz)	17.5	1.6	100.0	98.3
Limit (dB)	33.5	56.9	6.1	6.4
Worst Pair	1,2	3,6	4,5	4,5
<b>PS ACR-N (dB)</b>	18.3	16.7	22.2	23.1
Freq. (MHz)	17.4	1.6	100.0	98.3
Limit (dB)	30.5	53.9	3.1	3.4

PASS	MAIN	SR	MAIN	SR
Worst Pair	1,2	1,2	1,2	1,2
<b>RL (dB)</b>	6.1	4.2	6.1	4.2
Freq. (MHz)	2.3	2.3	2.3	2.3
Limit (dB)	17.0	17.0	17.0	17.0

Compliant Network Standards:  
 10BASE-T      100BASE-TX      100BASE-T4  
 1000BASE-T    2.5GBASE-T      ATM-25  
 ATM-51        ATM-155          100VG-AnyLan  
 TR-4           TR-16 Active     TR-16 Passive