



Cable ID: C5O-004289

Test Limit: TIA Cat 5e Channel

Limits Version: V7.7

Date / Time: 01/11/2026 02:08:42 PM

Headroom 14.3 dB (NEXT 1,2-3,6)

Cable Type: Cat 5e U/UTP

NVP: 69.0%

Main: Versiv

S/N: 20520181

Software Version: V6.8 Build 6

Calibration Date: 07/19/2023

Adapter: DSX-5000 (DSX-CHA004)

S/N: 5199219

Test Summary: PASS

Remote: Versiv

S/N: 20500587

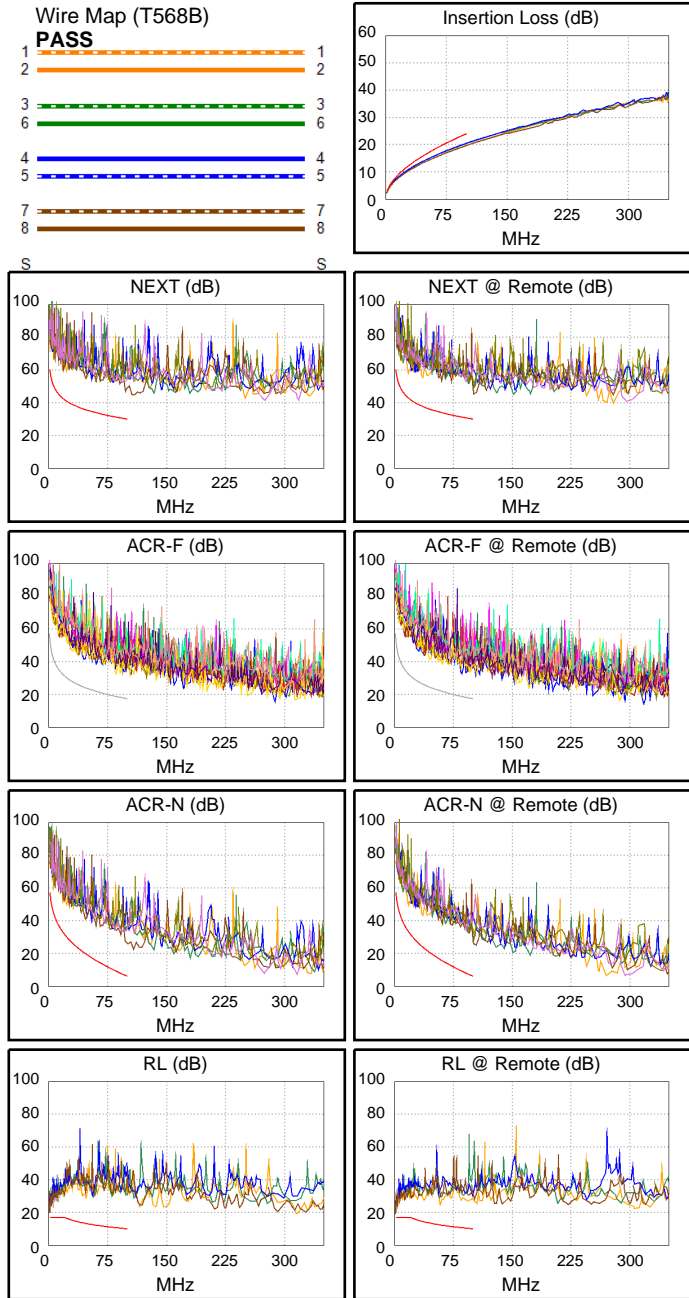
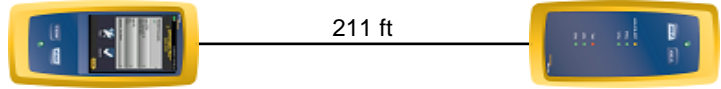
Software Version: V6.8 Build 6

Calibration Date: 07/19/2023

Adapter: DSX-5000R (DSX-CHA004)

S/N: 5199212

Length (ft), Limit 328	[Pair 7,8]	211
Prop. Delay (ns), Limit 555	[Pair 4,5]	326
Delay Skew (ns), Limit 50	[Pair 4,5]	15
Resistance (ohms)	[Pair 4,5]	30.05
Insertion Loss Margin (dB)	[Pair 4,5]	3.5
Frequency (MHz)	[Pair 4,5]	100.0
Limit (dB)	[Pair 4,5]	24.0



Worst Case Margin Worst Case Value

PASS	MAIN	SR	MAIN	SR
Worst Pair	1,2-3,6	1,2-3,6	3,6-4,5	3,6-4,5
NEXT (dB)	14.3	15.0	16.5	18.4
Freq. (MHz)	1.6	17.5	98.3	100.0
Limit (dB)	59.9	42.9	30.2	30.1
Worst Pair	3,6	1,2	4,5	4,5
PS NEXT (dB)	16.1	16.9	18.1	18.8
Freq. (MHz)	1.6	17.5	98.3	100.0
Limit (dB)	56.9	39.9	27.2	27.1

PASS	MAIN	SR	MAIN	SR
Worst Pair	7,8-1,2	1,2-7,8	7,8-1,2	1,2-7,8
ACR-F (dB)	13.7	13.9	14.2	14.2
Freq. (MHz)	85.5	85.5	91.8	91.8
Limit (dB)	18.8	18.8	18.1	18.1
Worst Pair	1,2	7,8	1,2	7,8
PS ACR-F (dB)	15.9	16.4	16.0	16.4
Freq. (MHz)	91.5	92.0	91.8	92.0
Limit (dB)	15.2	15.1	15.1	15.1

N/A	MAIN	SR	MAIN	SR
Worst Pair	1,2-3,6	1,2-3,6	3,6-4,5	3,6-4,5
ACR-N (dB)	14.7	15.9	20.0	21.9
Freq. (MHz)	1.6	17.5	98.3	100.0
Limit (dB)	56.9	33.5	6.4	6.1
Worst Pair	3,6	1,2	4,5	4,5
PS ACR-N (dB)	16.5	18.1	21.6	22.3
Freq. (MHz)	1.6	17.5	98.3	100.0
Limit (dB)	53.9	30.5	3.4	3.1

PASS	MAIN	SR	MAIN	SR
Worst Pair	1,2	4,5	1,2	4,5
RL (dB)	5.4	5.9	5.4	5.9
Freq. (MHz)	2.4	2.1	2.4	2.1
Limit (dB)	17.0	17.0	17.0	17.0

Compliant Network Standards:
 10BASE-T 100BASE-TX 100BASE-T4
 1000BASE-T 2.5GBASE-T ATM-25
 ATM-51 ATM-155 100VG-AnyLan
 TR-4 TR-16 Active TR-16 Passive