



Cable ID/ Test ID: ASF-009699

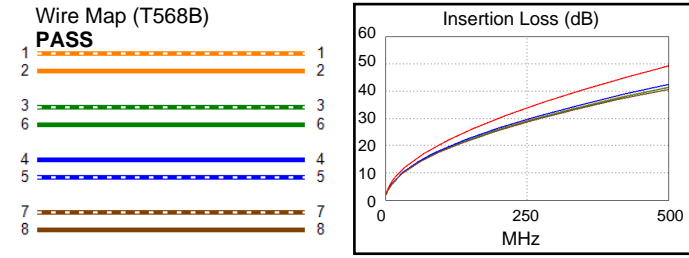
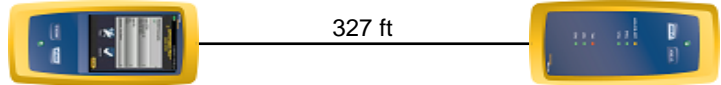
Test Limit: TIA Cat 6A Channel
Limits Version: V7.11
Date / Time: 01/14/2026 09:29:17 AM
Operator: CC
Headroom 14.3 dB (NEXT 3,6-4,5)
Cable Type: Cat 6A S/FTP
NVP: 74.8%

Main: Versiv
S/N: 1927448
Software Version: V6.13 Build 2
Calibration Date: 07/30/2025
Adapter: DSX-8000 (DSX-CHA804)
S/N: 23340195

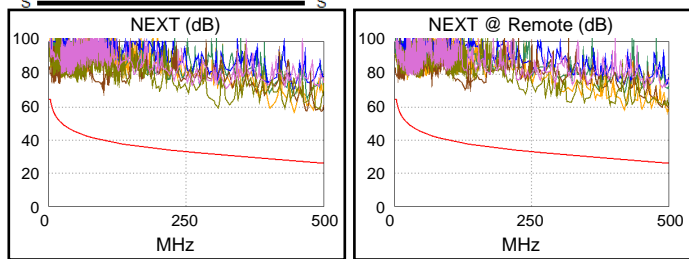
Test Summary: PASS

Remote: Versiv
S/N: 1927219
Software Version: V6.13 Build 2
Calibration Date: 07/30/2025
Adapter: DSX-8000R (DSX-CHA804)
S/N: 23340196

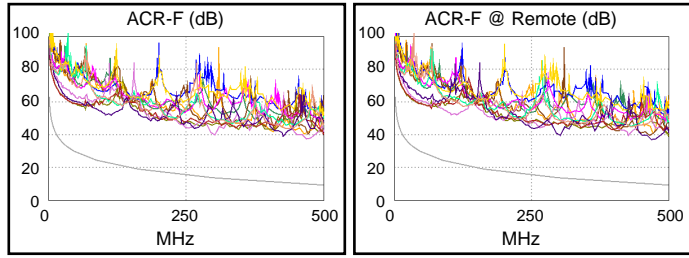
Length (ft), Limit 328	[Pair 7,8]	327
Prop. Delay (ns), Limit 555	[Pair 4,5]	453
Delay Skew (ns), Limit 50	[Pair 4,5]	9
Resistance (ohms)	[Pair 4,5]	14.20
Insertion Loss Margin (dB)	[Pair 4,5]	6.9
Frequency (MHz)	[Pair 4,5]	500.0
Limit (dB)	[Pair 4,5]	49.3



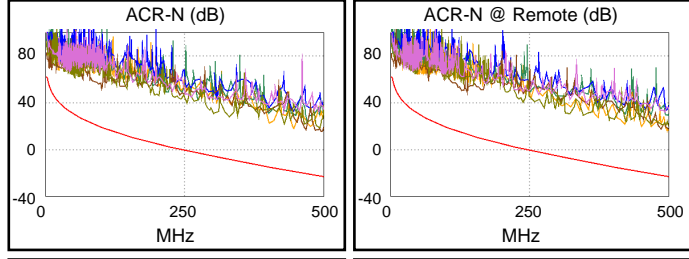
	Worst Case Margin		Worst Case Value	
PASS	MAIN	SR	MAIN	SR
Worst Pair	3,6-4,5	3,6-4,5	1,2-3,6	1,2-3,6
NEXT (dB)	15.6	14.3	29.6	31.0
Freq. (MHz)	3.0	3.3	446.0	497.0
Limit (dB)	65.0	64.5	27.4	26.2
Worst Pair	3,6	3,6	3,6	3,6
PS NEXT (dB)	17.9	15.9	31.6	31.4
Freq. (MHz)	3.0	3.3	485.0	500.0
Limit (dB)	62.0	62.0	23.6	23.2



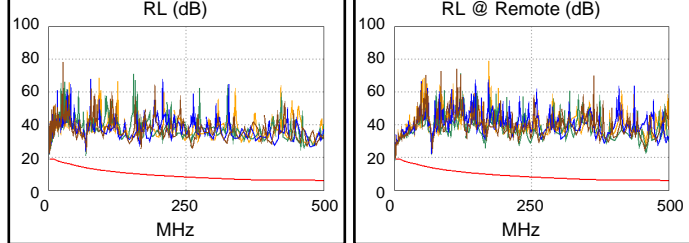
PASS	MAIN	SR	MAIN	SR
Worst Pair	3,6-4,5	4,5-3,6	3,6-7,8	7,8-3,6
ACR-F (dB)	25.4	25.4	27.1	26.7
Freq. (MHz)	1.0	1.0	466.0	466.0
Limit (dB)	63.3	63.3	9.9	9.9
Worst Pair	3,6	3,6	7,8	3,6
PS ACR-F (dB)	27.4	26.0	29.8	28.8
Freq. (MHz)	1.0	1.0	466.0	471.0
Limit (dB)	60.3	60.3	6.9	6.8



N/A	MAIN	SR	MAIN	SR
Worst Pair	3,6-4,5	3,6-4,5	3,6-4,5	1,2-3,6
ACR-N (dB)	16.0	14.8	38.2	39.0
Freq. (MHz)	3.0	3.3	495.0	497.0
Limit (dB)	61.4	60.7	-22.8	-23.0
Worst Pair	3,6	3,6	3,6	3,6
PS ACR-N (dB)	18.4	16.5	39.3	39.4
Freq. (MHz)	3.0	3.3	485.0	500.0
Limit (dB)	58.4	58.2	-24.9	-26.1



PASS	MAIN	SR	MAIN	SR
Worst Pair	3,6	3,6	3,6	3,6
RL (dB)	8.8	5.7	10.9	16.9
Freq. (MHz)	2.8	2.8	68.0	458.0
Limit (dB)	19.0	19.0	13.7	6.0



Compliant Network Standards:
 10BASE-T 100BASE-TX 100BASE-T4
 1000BASE-T 2.5GBASE-T 5GBASE-T
 10GBASE-T ATM-25 ATM-51
 ATM-155 100VG-AnyLan TR-4
 TR-16 Active TR-16 Passive