



**Cable ID/ Test ID: 6UO-005790**

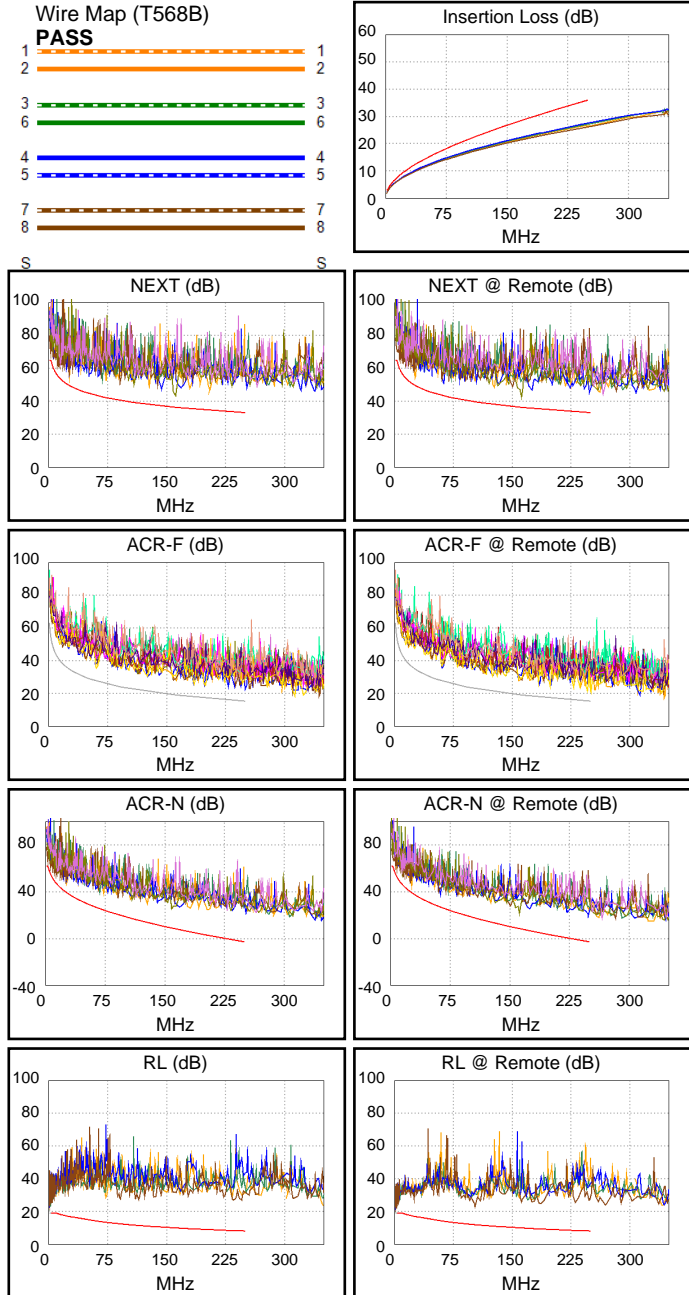
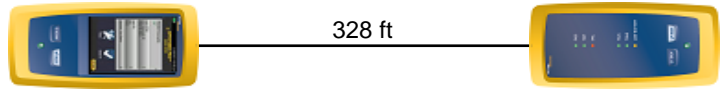
Test Limit: TIA Cat 6 Channel  
Limits Version: V7.11  
Date / Time: 01/13/2026 12:39:18 PM  
Operator: CC  
Headroom 3.8 dB (NEXT 1,2-3,6)  
Cable Type: Cat 6 U/UTP  
NVP: 70.8%

Main: Versiv  
S/N: 1927448  
Software Version: V6.13 Build 2  
Calibration Date: 07/30/2025  
Adapter: DSX-8000 (DSX-CHA804)  
S/N: 23340195

**Test Summary: PASS**

Remote: Versiv  
S/N: 1927219  
Software Version: V6.13 Build 2  
Calibration Date: 07/30/2025  
Adapter: DSX-8000R (DSX-CHA804)  
S/N: 23340196

Length (ft), Limit 328	[Pair 7,8]	328
Prop. Delay (ns), Limit 555	[Pair 4,5]	498
Delay Skew (ns), Limit 50	[Pair 4,5]	27
Resistance (ohms)	[Pair 4,5]	14.77
Insertion Loss Margin (dB)	[Pair 4,5]	8.3
Frequency (MHz)	[Pair 4,5]	247.5
Limit (dB)	[Pair 4,5]	35.7



Worst Case Margin Worst Case Value

PASS	MAIN	SR	MAIN	SR
Worst Pair	3,6-4,5	1,2-3,6	3,6-7,8	3,6-7,8
<b>NEXT (dB)</b>	4.0	3.8	6.9	6.2
Freq. (MHz)	2.9	26.4	161.5	162.0
Limit (dB)	65.0	49.6	36.4	36.4
Worst Pair	1,2	3,6	3,6	3,6
<b>PS NEXT (dB)</b>	6.0	5.8	9.5	9.0
Freq. (MHz)	26.4	26.4	161.5	162.0
Limit (dB)	47.0	47.0	33.5	33.4

PASS	MAIN	SR	MAIN	SR
Worst Pair	1,2-7,8	7,8-1,2	1,2-7,8	7,8-1,2
<b>ACR-F (dB)</b>	6.7	6.2	6.7	6.2
Freq. (MHz)	246.0	246.0	246.0	246.0
Limit (dB)	15.4	15.4	15.4	15.4
Worst Pair	1,2	1,2	7,8	1,2
<b>PS ACR-F (dB)</b>	9.3	8.7	9.5	8.7
Freq. (MHz)	62.3	246.0	246.0	246.0
Limit (dB)	24.4	12.4	12.4	12.4

N/A	MAIN	SR	MAIN	SR
Worst Pair	3,6-4,5	1,2-3,6	3,6-7,8	1,2-7,8
<b>ACR-N (dB)</b>	4.6	5.6	13.8	21.4
Freq. (MHz)	2.9	26.4	161.5	249.0
Limit (dB)	61.6	39.2	8.5	-2.7
Worst Pair	3,6	3,6	3,6	1,2
<b>PS ACR-N (dB)</b>	7.1	7.7	15.8	22.9
Freq. (MHz)	2.9	26.4	161.5	249.0
Limit (dB)	58.6	36.5	5.6	-5.7

PASS	MAIN	SR	MAIN	SR
Worst Pair	7,8	7,8	7,8	7,8
<b>RL (dB)</b>	8.9	7.7	17.4	10.1
Freq. (MHz)	3.6	3.6	244.5	103.0
Limit (dB)	19.0	19.0	8.1	11.9

Compliant Network Standards:  
 10BASE-T 100BASE-TX 100BASE-T4  
 1000BASE-T 2.5GBASE-T 5GBASE-T  
 ATM-25 ATM-51 ATM-155  
 100VG-AnyLan TR-4 TR-16 Active  
 TR-16 Passive