



### Cable ID/ Test ID: 6UI-003807

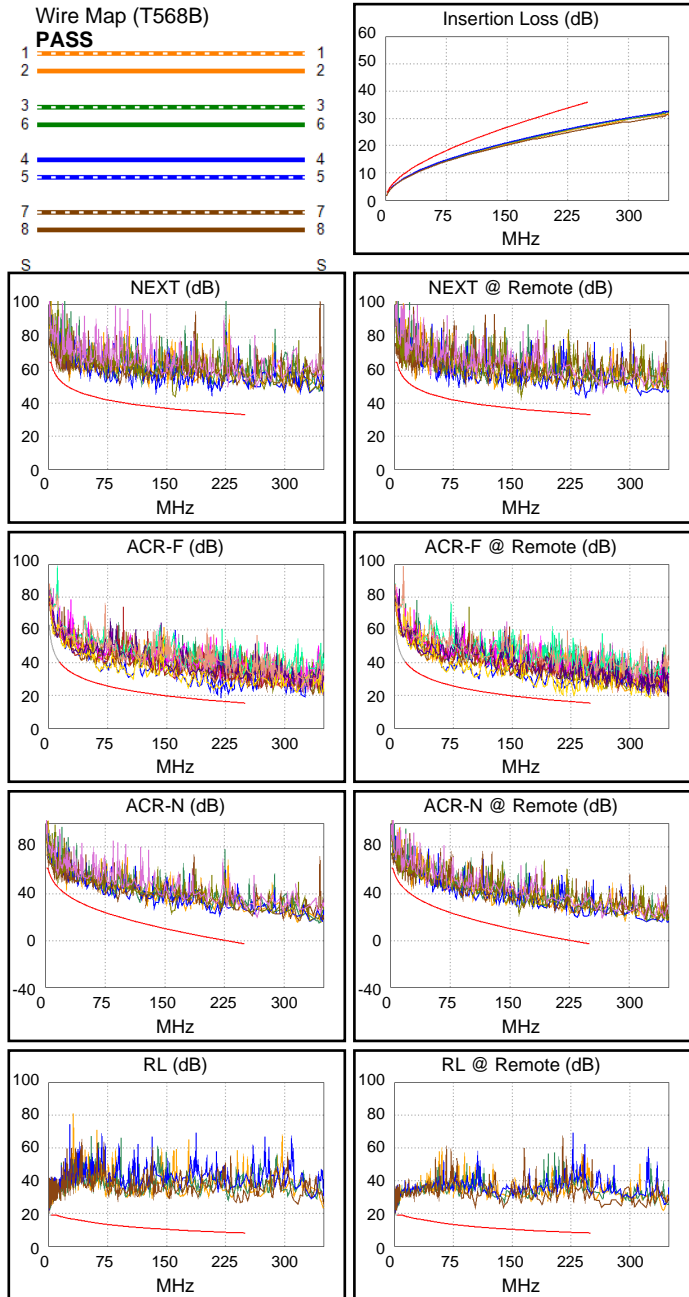
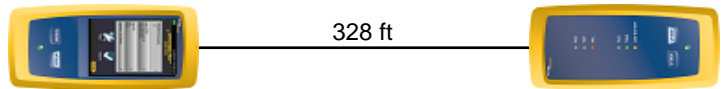
**Test Limit: TIA Cat 6 Channel**  
Limits Version: V7.11  
Date / Time: 01/13/2026 12:32:01 PM  
Operator: CC  
**Headroom 4.2 dB (NEXT 3,6-4,5)**  
Cable Type: Cat 6 U/UTP  
NVP: 70.8%

Main: Versiv  
S/N: 1927448  
Software Version: V6.13 Build 2  
Calibration Date: 07/30/2025  
Adapter: DSX-8000 (DSX-CHA804)  
S/N: 23340195

### Test Summary: PASS

Remote: Versiv  
S/N: 1927219  
Software Version: V6.13 Build 2  
Calibration Date: 07/30/2025  
Adapter: DSX-8000R (DSX-CHA804)  
S/N: 23340196

Length (ft), Limit 328	[Pair 7,8]	328
Prop. Delay (ns), Limit 555	[Pair 4,5]	497
Delay Skew (ns), Limit 50	[Pair 4,5]	26
Resistance (ohms)	[Pair 4,5]	14.77
Insertion Loss Margin (dB)	[Pair 4,5]	8.4
Frequency (MHz)	[Pair 4,5]	250.0
Limit (dB)	[Pair 4,5]	35.9



Worst Case Margin Worst Case Value

PASS	MAIN	SR	MAIN	SR
Worst Pair	3,6-4,5	1,2-3,6	3,6-7,8	1,2-7,8
<b>NEXT (dB)</b>	4.2	5.1	6.7	10.3
Freq. (MHz)	3.9	26.5	161.5	244.0
Limit (dB)	63.3	49.6	36.4	33.3
Worst Pair	3,6	3,6	3,6	7,8
<b>PS NEXT (dB)</b>	5.9	7.3	9.3	12.7
Freq. (MHz)	26.4	26.5	161.5	244.0
Limit (dB)	47.0	46.9	33.5	30.3

PASS	MAIN	SR	MAIN	SR
Worst Pair	1,2-7,8	7,8-1,2	1,2-7,8	7,8-1,2
<b>ACR-F (dB)</b>	4.1	3.9	4.6	4.0
Freq. (MHz)	214.5	214.5	229.0	229.0
Limit (dB)	16.6	16.6	16.1	16.1
Worst Pair	7,8	1,2	7,8	1,2
<b>PS ACR-F (dB)</b>	7.0	6.5	7.5	6.7
Freq. (MHz)	214.5	214.5	229.0	229.0
Limit (dB)	13.6	13.6	13.1	13.1

N/A	MAIN	SR	MAIN	SR
Worst Pair	3,6-4,5	3,6-4,5	1,2-7,8	1,2-7,8
<b>ACR-N (dB)</b>	4.9	6.3	20.8	19.6
Freq. (MHz)	3.9	3.8	219.0	244.0
Limit (dB)	59.3	59.6	0.9	-2.1
Worst Pair	3,6	3,6	1,2	1,2
<b>PS ACR-N (dB)</b>	6.8	8.1	22.9	21.8
Freq. (MHz)	4.0	3.8	219.0	244.0
Limit (dB)	56.5	57.1	-2.1	-5.1

PASS	MAIN	SR	MAIN	SR
Worst Pair	3,6	3,6	7,8	7,8
<b>RL (dB)</b>	8.8	7.7	17.4	13.1
Freq. (MHz)	3.5	3.5	245.0	139.0
Limit (dB)	19.0	19.0	8.1	10.6

Compliant Network Standards:  
 10BASE-T      100BASE-TX      100BASE-T4  
 1000BASE-T    2.5GBASE-T      5GBASE-T  
 ATM-25        ATM-51            ATM-155  
 100VG-AnyLan    TR-4              TR-16 Active  
 TR-16 Passive