



Cable ID/ Test ID: 6UI-001352

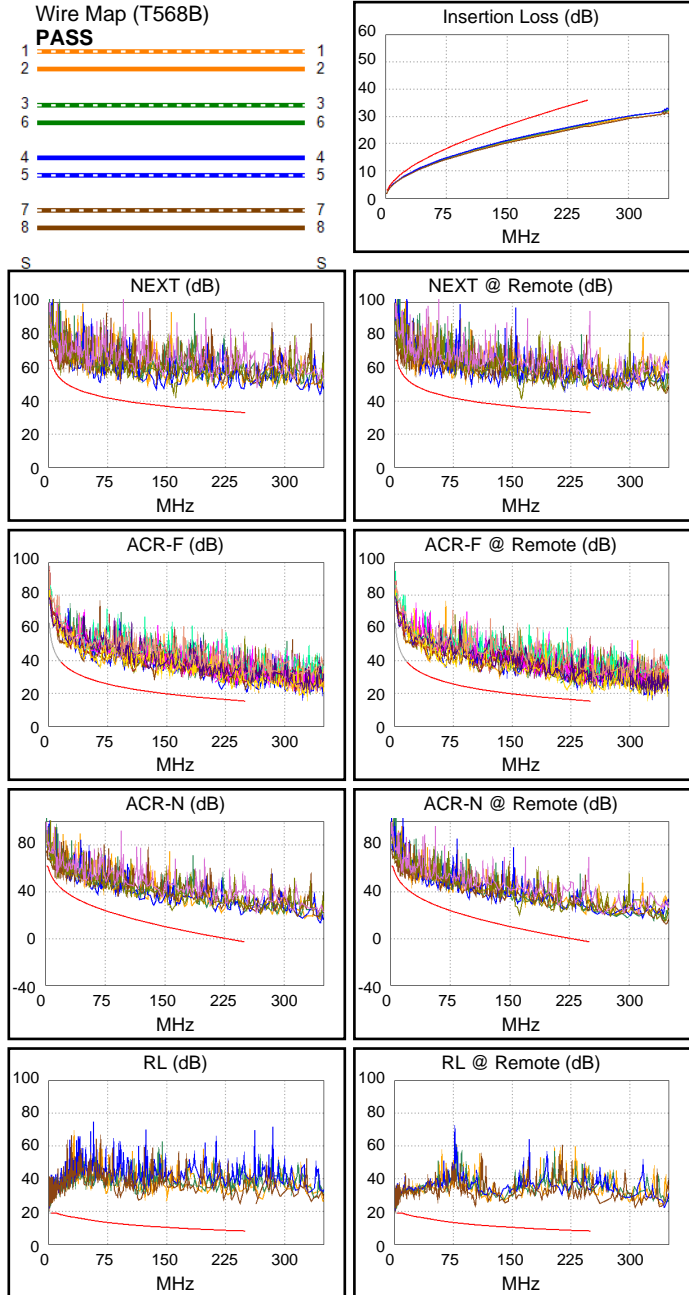
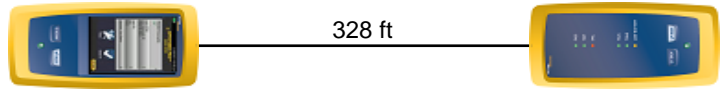
Test Limit: TIA Cat 6 Channel
Limits Version: V7.11
Date / Time: 01/13/2026 12:29:53 PM
Operator: CC
Headroom 4.4 dB (NEXT 3,6-7,8)
Cable Type: Cat 6 U/UTP
NVP: 70.8%

Main: Versiv
S/N: 1927448
Software Version: V6.13 Build 2
Calibration Date: 07/30/2025
Adapter: DSX-8000 (DSX-CHA804)
S/N: 23340195

Test Summary: PASS

Remote: Versiv
S/N: 1927219
Software Version: V6.13 Build 2
Calibration Date: 07/30/2025
Adapter: DSX-8000R (DSX-CHA804)
S/N: 23340196

Length (ft), Limit 328	[Pair 7,8]	328
Prop. Delay (ns), Limit 555	[Pair 4,5]	498
Delay Skew (ns), Limit 50	[Pair 4,5]	27
Resistance (ohms)	[Pair 4,5]	14.76
Insertion Loss Margin (dB)	[Pair 4,5]	8.5
Frequency (MHz)	[Pair 4,5]	250.0
Limit (dB)	[Pair 4,5]	35.9



Worst Case Margin Worst Case Value

PASS	MAIN	SR	MAIN	SR
Worst Pair	3,6-7,8	3,6-4,5	3,6-7,8	3,6-7,8
NEXT (dB)	4.4	4.6	8.3	5.1
Freq. (MHz)	15.3	4.0	159.0	162.0
Limit (dB)	53.6	63.0	36.5	36.4
Worst Pair	7,8	3,6	7,8	7,8
PS NEXT (dB)	5.5	6.9	10.8	8.0
Freq. (MHz)	15.4	4.0	159.0	162.0
Limit (dB)	50.9	60.5	33.6	33.4

PASS	MAIN	SR	MAIN	SR
Worst Pair	1,2-7,8	7,8-1,2	1,2-7,8	7,8-1,2
ACR-F (dB)	5.9	5.6	5.9	5.6
Freq. (MHz)	220.5	220.5	220.5	220.5
Limit (dB)	16.4	16.4	16.4	16.4
Worst Pair	7,8	1,2	1,2	1,2
PS ACR-F (dB)	8.5	7.8	9.1	7.8
Freq. (MHz)	220.5	220.5	250.0	220.5
Limit (dB)	13.4	13.4	12.3	13.4

N/A	MAIN	SR	MAIN	SR
Worst Pair	3,6-7,8	3,6-4,5	1,2-7,8	3,6-7,8
ACR-N (dB)	6.0	5.3	22.1	12.0
Freq. (MHz)	15.3	4.0	246.0	162.0
Limit (dB)	45.7	59.0	-2.4	8.4
Worst Pair	3,6	3,6	1,2	1,2
PS ACR-N (dB)	7.1	7.6	24.0	24.0
Freq. (MHz)	15.3	4.0	247.0	245.0
Limit (dB)	43.1	56.5	-5.4	-5.2

PASS	MAIN	SR	MAIN	SR
Worst Pair	7,8	3,6	7,8	7,8
RL (dB)	8.5	7.6	16.1	11.5
Freq. (MHz)	3.6	3.5	244.5	103.0
Limit (dB)	19.0	19.0	8.1	11.9

Compliant Network Standards:
 10BASE-T 100BASE-TX 100BASE-T4
 1000BASE-T 2.5GBASE-T 5GBASE-T
 ATM-25 ATM-51 ATM-155
 100VG-AnyLan TR-4 TR-16 Active
 TR-16 Passive